

BLACKOUT FABRICS

Blackout fabrics provide excellent solar heat reduction and UV protection, leading to sufficient energy savings. Gain the ultimate experience in privacy for your residential or commercial space while maintaining a clean designer look. Achieve complete blackout with light-blocking upgrades such as side and sill channels.

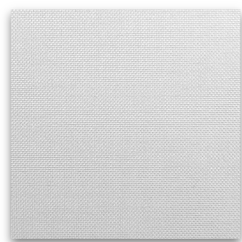


HAMPTON

Blackout

coulisse

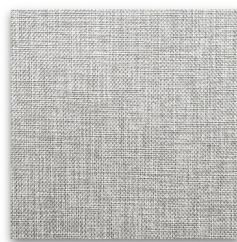
since 1992



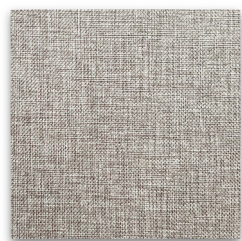
White



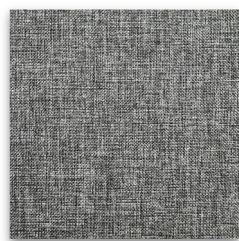
Off White



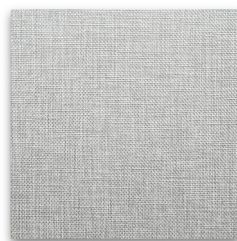
Sand



Beige



Anthracite



Light Grey

STYLE:

Blackout

OPENNESS FACTOR:

0%

COMPOSITION:

100% PES

WEIGHT:

11.7 oz.

THICKNESS:

0.024 in.

WIDTH:

110 in.



\$\$\$

*Due to the technical limitations of digital cameras and inconsistencies of display monitors, the characteristics and colors of the fabrics seen on your screen may appear different than the actual product. We will be happy to provide samples of our products upon request.

MEXICO

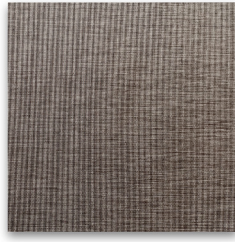
Blackout

coulisse

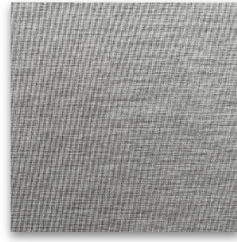
since 1992



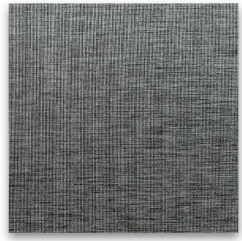
Sand



Coffee



Ash



Slate

STYLE:

Blackout

OPENNESS FACTOR:

0%

COMPOSITION:

100% PES

WEIGHT:

13.27 oz.

THICKNESS:

0.02 in.

WIDTH:

110 in.

FIRE CLASSIFICATIONS:

NFPA 701

DIN 4102



\$\$\$

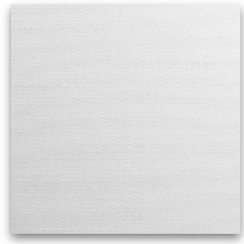
*Due to the technical limitations of digital cameras and inconsistencies of display monitors, the characteristics and colors of the fabrics seen on your screen may appear different than the actual product. We will be happy to provide samples of our products upon request.

MOMBASSA

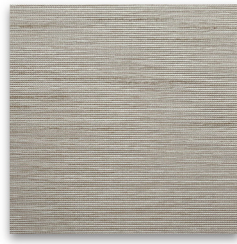
Blackout

coulisse

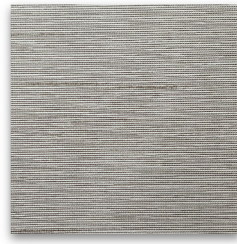
since 1992



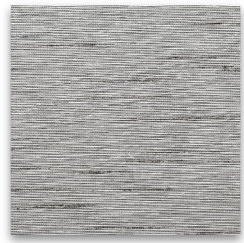
Snow



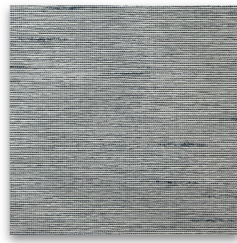
Sand



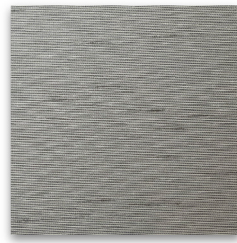
Oyster



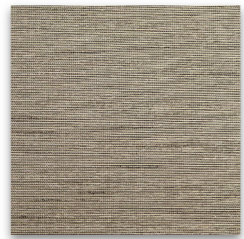
Dust



Ink



Ash



Grain

STYLE:

Blackout

OPENNESS FACTOR:

0%

COMPOSITION:

100% PES

WEIGHT:

11.8 oz.

THICKNESS:

0.022 in.

WIDTH:

118 in.



\$\$\$.

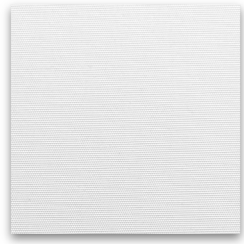
*Due to the technical limitations of digital cameras and inconsistencies of display monitors, the characteristics and colors of the fabrics seen on your screen may appear different than the actual product. We will be happy to provide samples of our products upon request.

SANTIAGO

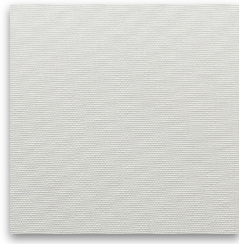
Blackout

coulisse

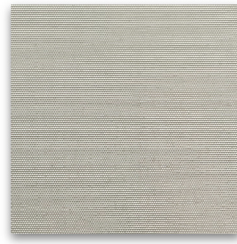
since 1992



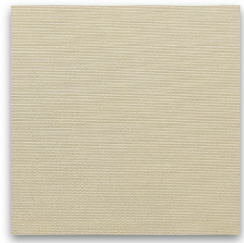
Bright White



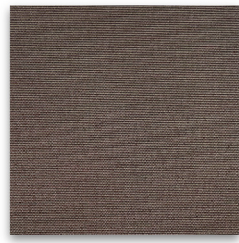
Blanc



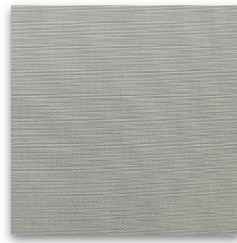
Gardenia



Sand



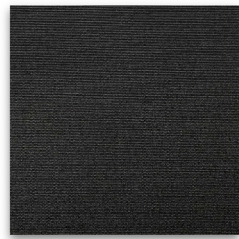
Chocolate



Metal



Raven



Black

STYLE:

Blackout

OPENNESS FACTOR:

0%

COMPOSITION:

100% PES

WEIGHT:

12.39 oz.

THICKNESS:

0.024 in.

WIDTH:

110 in.

FIRE CLASSIFICATION:

DIN 4102 (Class B1)

NFPA 701



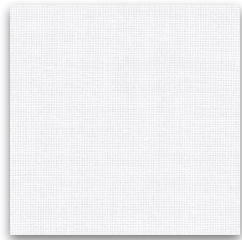
\$\$\$.

*Due to the technical limitations of digital cameras and inconsistencies of display monitors, the characteristics and colors of the fabrics seen on your screen may appear different than the actual product. We will be happy to provide samples of our products upon request.

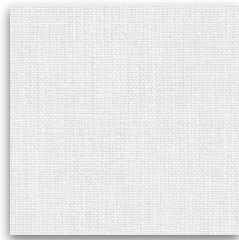
NATAL

Blackout

coulisse
since 1992



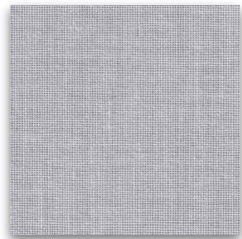
Bright White



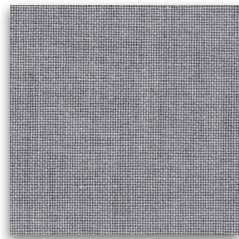
Star White



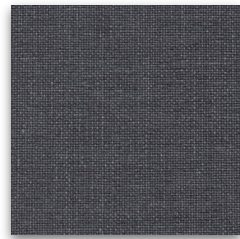
Moonbeam



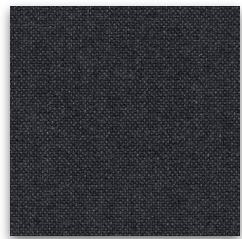
Oyster Grey



Moon Mist



Jet Set



Black Coffee

STYLE:

Blackout

OPENNESS FACTOR:

0%

COMPOSITION:

100% PES

WEIGHT:

11.79 oz.

THICKNESS:

0.025 in.

WIDTH:

98 in.



RAILROADABLE



SEAMABLE



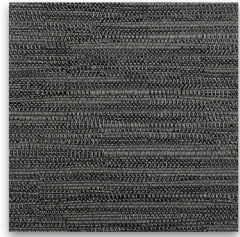
COMPANION FABRIC

\$\$. .

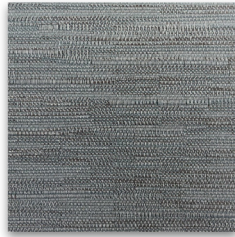
*Due to the technical limitations of digital cameras and inconsistencies of display monitors, the characteristics and colors of the fabrics seen on your screen may appear different than the actual product. We will be happy to provide samples of our products upon request.

VERONA TWILIGHT

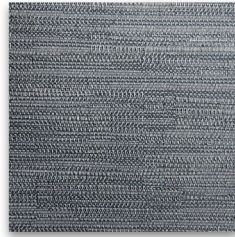
Blackout



Eclipse



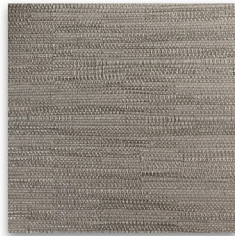
Calypso



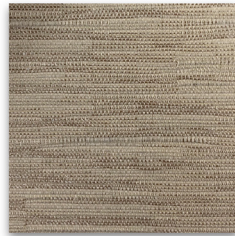
Hydra



Stardust



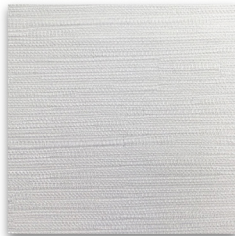
Orion



Nova



Luna



Polaris

STYLE:

Blackout

OPENNESS FACTOR:

0%

COMPOSITION:

50% PES, 50% Acrylic

WEIGHT:

11.65 oz.

THICKNESS:

0.024 in.

WIDTH:

118 in.

FIRE CLASSIFICATION:

NFPA 701

CAN/ULC -s109-03



\$\$\$.

*Due to the technical limitations of digital cameras and inconsistencies of display monitors, the characteristics and colors of the fabrics seen on your screen may appear different than the actual product. We will be happy to provide samples of our products upon request.

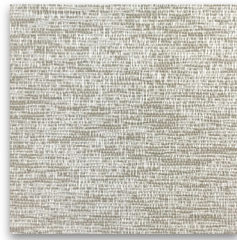
SHEERWEAVE 7200R

PHIFER

Blackout



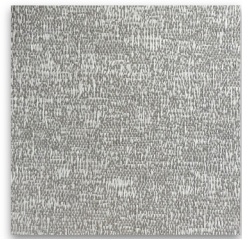
Swan



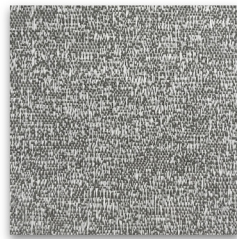
Oyster



Sail



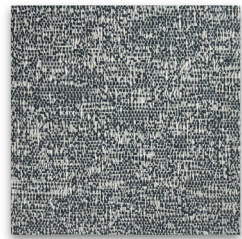
Chiffon



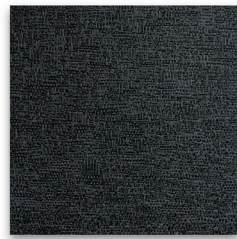
Earl Grey



Chrome



Blazer



Raven

STYLE:

Blackout

OPENNESS FACTOR:

0%

COMPOSITION:

100% PES

WEIGHT:

11.06 oz.

THICKNESS:

0.022 in.

WIDTH:

118 in.

FIRE CLASSIFICATION:

NFPA 101 (Class B)



\$\$. .

*Due to the technical limitations of digital cameras and inconsistencies of display monitors, the characteristics and colors of the fabrics seen on your screen may appear different than the actual product. We will be happy to provide samples of our products upon request.

SHEERWEAVE 7400

Blackout

PHIFER



Cotton



Parchment



Sesame



Pebble



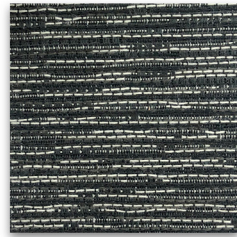
Shale



Seagrass



Spice



Flint

STYLE:

Blackout

OPENNESS FACTOR:

0%

COMPOSITION:

100% PES

WEIGHT:

12.53 oz.

THICKNESS:

0.029 in.

WIDTH:

118 in.

FIRE CLASSIFICATION:

NFPA 701



\$\$\$.

*Due to the technical limitations of digital cameras and inconsistencies of display monitors, the characteristics and colors of the fabrics seen on your screen may appear different than the actual product. We will be happy to provide samples of our products upon request.

WOODLAND

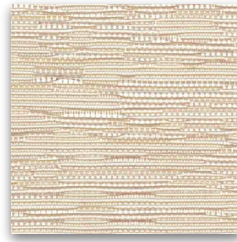
Blackout



Swan



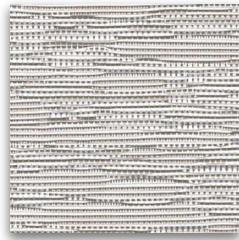
Urchin



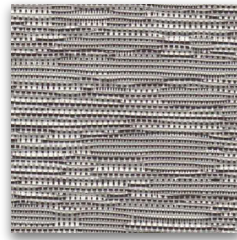
Gazelle



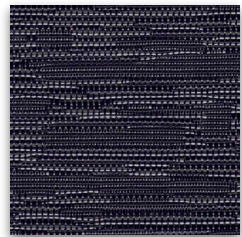
Baffin



Errol



Lynx



Formosa

\$. . .

STYLE:

Blackout

OPENNESS FACTOR:

0%

COMPOSITION:

100% PES

WEIGHT:

11.8 oz.

THICKNESS:

0.06 in.

WIDTH:

118 in.

FIRE CLASSIFICATION:

NFPA 701

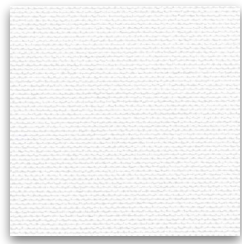


*Due to the technical limitations of digital cameras and inconsistencies of display monitors, the characteristics and colors of the fabrics seen on your screen may appear different than the actual product. We will be happy to provide samples of our products upon request.

PALM BEACH



Blackout



Quill



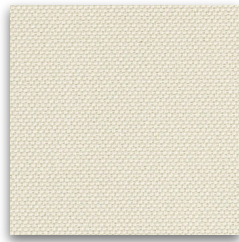
Lyric



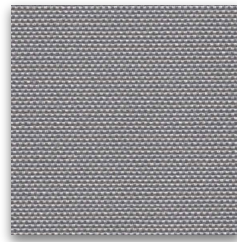
Gull



Merino



Jasmine



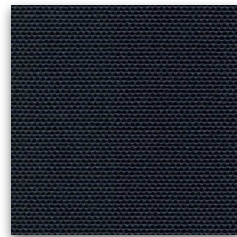
Porpoise



Iron



Summer Storm



Quartz

STYLE:

Blackout

OPENNESS FACTOR:

0%

COMPOSITION:

100% PES

WEIGHT:

12.09 oz.

THICKNESS:

0.025 in.

WIDTH:

118 in.



\$\$\$. .

*Due to the technical limitations of digital cameras and inconsistencies of display monitors, the characteristics and colors of the fabrics seen on your screen may appear different than the actual product. We will be happy to provide samples of our products upon request.

MONTEREY

Blackout



Mammoth



Hermosa



Runyon



Silver Lake

STYLE:

Blackout

OPENNESS FACTOR:

0%

COMPOSITION:

100% PES

WEIGHT:

10.71 oz.

THICKNESS:

0.029 in.

WIDTH:

110 in.

FIRE CLASSIFICATION:

NFPA 701



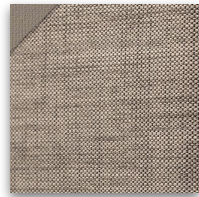
\$\$\$. .

*Due to the technical limitations of digital cameras and inconsistencies of display monitors, the characteristics and colors of the fabrics seen on your screen may appear different than the actual product. We will be happy to provide samples of our products upon request.

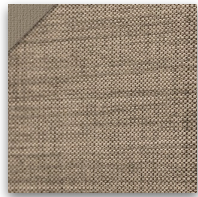
LINEN LOOK



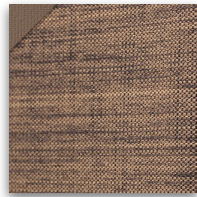
Blackout



Nature



Desert



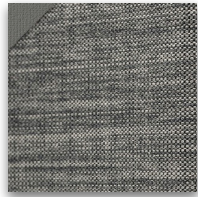
Brown



Dark Brown



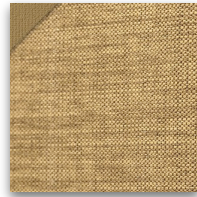
Black



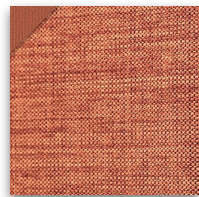
Lava



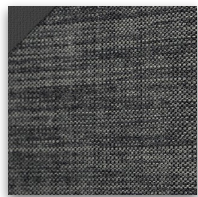
Chopper



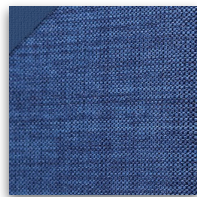
Cedar



Chutney



Phantom



Indigo

STYLE:

Blackout / Color Backing

OPENNESS FACTOR:

0%

COMPOSITION:

100% PES

WEIGHT:

10.62 oz.

THICKNESS:

0.0197 in.

WIDTH:

94.5 in.



*Due to the technical limitations of digital cameras and inconsistencies of display monitors, the characteristics and colors of the fabrics seen on your screen may appear different than the actual product. We will be happy to provide samples of our products upon request.

PERUGIA

Blackout



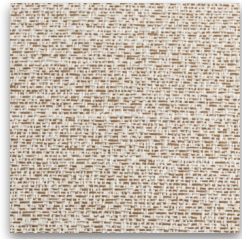
White



Ivory



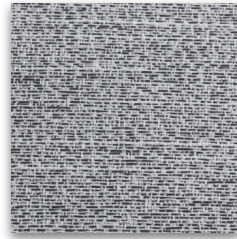
Sand



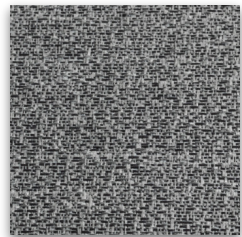
Brown



Light Gray



Gray



Anthracite



Sage

STYLE:

Blackout

OPENNESS FACTOR:

0%

COMPOSITION:

100% PES

WEIGHT:

9.73 oz.

THICKNESS:

0.0197 in.

WIDTH:

118 in.



*Due to the technical limitations of digital cameras and inconsistencies of display monitors, the characteristics and colors of the fabrics seen on your screen may appear different than the actual product. We will be happy to provide samples of our products upon request.