

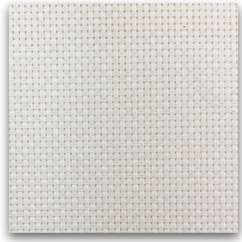
SOLAR FABRICS

Solar fabrics provide a balance of light control, glare control, and UV protection while maintaining the users connection with the outside world. An ideal solution for both residential and commercial spaces. This collection features a wide range of colors, weave textures, and openness factors to compliment any decor.

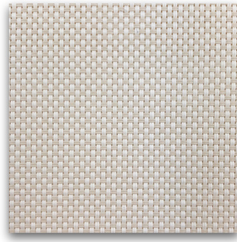


SCREEN ESSENTIAL

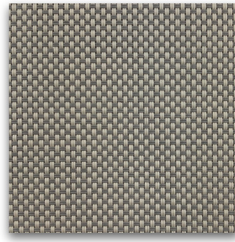
1% 3% 5% 10%



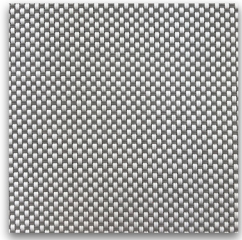
Chalk



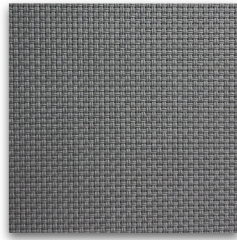
Chalk Beige Cream



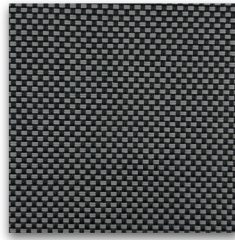
Beige Pearl Grey



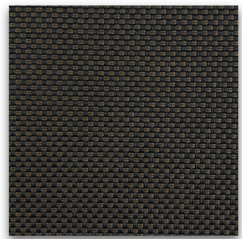
Chalk Soft Grey



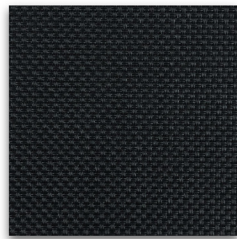
Soft Grey



Charcoal Iron Grey



Charcoal Dark Bronze



Ebony



coulisse

since 1992

STYLE:

Solar

OPENNESS FACTOR:

3001 = 1% 3003 = 3% 3005 = 5% 3010 = 10%

COMPOSITION:

70% PVC, 30% PES

UV BLOCKAGE:

1% = Approx. 99% | 3% = Approx. 97% | 5% = Approx. 95% | 10% = Approx. 90%

WEIGHT:

1% = 14.6oz. | 3% = 13.86 oz. | 5% = 12.09 oz. | 10% = 10.03 oz.

THICKNESS:

1% = 0.026 in. | 3% = 0.022 in. | 5% = 0.021 in. | 10% = 0.019 in.

WIDTH:

1% = 118 in. | 3% = 118 in. | 5% = 118 in. | 10% = 118 in.

FIRE CLASSIFICATION:

DIN 4102, CLASS B1

NFPA 701

UNE - EN 13773:2003 Class 1



*Due to the technical limitations of digital cameras and inconsistencies of display monitors, the characteristics and colors of the fabrics seen on your screen may appear different than the actual product. We will be happy to provide samples of our products upon request.

E SCREEN

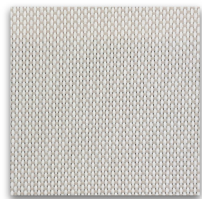
1% 3% 5% 10%



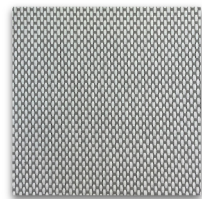
Sun Control Textiles™



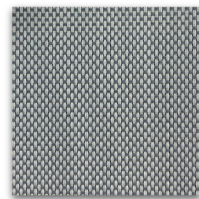
White/White



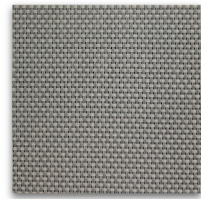
White/Linen



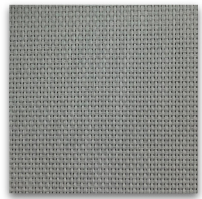
White/Pearl



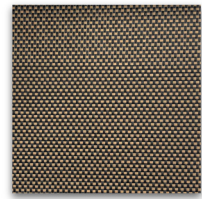
Pearl/Grey



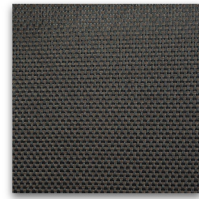
Pearl/Linen



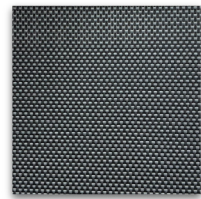
Pearl/Pearl



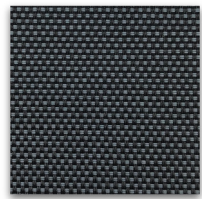
Charcoal/Apricot



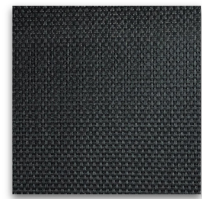
Charcoal/Cocoa



Charcoal/Grey-stone



Charcoal/Grey



Charcoal/Charcoal

7501 = \$\$\$ · 7503 = \$\$\$\$ · 7505 = \$\$ · · 7510 = \$\$\$ · · ·

STYLE:

Solar

OPENNESS FACTOR:

7501 = 1% 7503 = 3% 7505 = 5% 7510 = 10%

COMPOSITION:

36% GRP, 64% VINYL

UV BLOCKAGE:

1% = Approx. 99% | 3% = Approx. 97% | 5% = Approx. 95% | 10% = Approx. 90%

WEIGHT:

1% = 13.3 oz. | 3% = 11.6 oz. | 5% = 10.7 oz. | 10% = 10.03 oz.

THICKNESS:

1% = 0.020 in. | 3% = 0.017 in. | 5% = 0.016 in. | 10% = 0.020 in.

WIDTH:

1% = 122 in. | 3% = 122 in. | 5% = 122 in. | 10% = 122 in.

FIRE CLASSIFICATION:

NFPA 701

CAN/ULC-S109-03

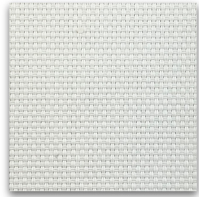


*Due to the technical limitations of digital cameras and inconsistencies of display monitors, the characteristics and colors of the fabrics seen on your screen may appear different than the actual product. We will be happy to provide samples of our products upon request.

SHEERWEAVE 2500, 2410, 2390, 2360

PHIFER

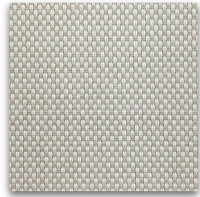
1% 3% 5% 10%



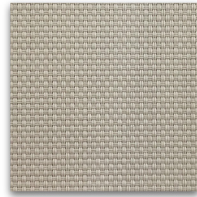
Brite White



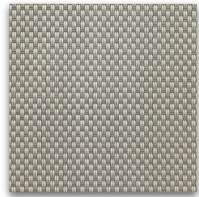
Oyster



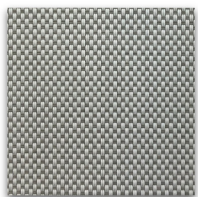
Oyster/Beige



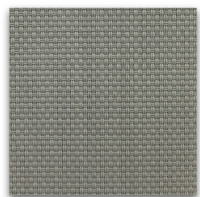
Beige



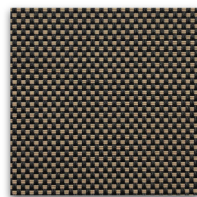
Beige/Pearl Grey



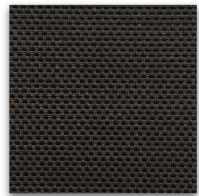
Oyster/Pearl Grey



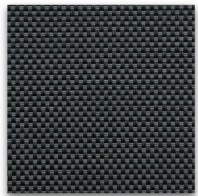
Pearl/Grey



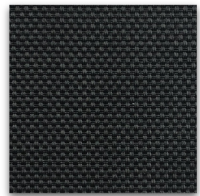
Charcoal/Alpaca



Charcoal/Chestnut



Charcoal/Grey



Charcoal

STYLE:

Solar

OPENNESS FACTOR:

2500 = 1% 2410 = 3% 2390 = 5% 2360 = 10%

COMPOSITION:

37% GRP, 63% VINYL

UV BLOCKAGE:

1% = Approx. 99% | 3% = Approx. 97% | 5% = Approx. 95% | 10% = Approx. 90%

WEIGHT:

1% = 16.2 oz. | 3% = 14.1 oz. | 5% = 11.8 oz. | 10% = 10.04 oz.

THICKNESS:

1% = 0.024 in. | 3% = 0.020 in. | 5% = 0.017 in. | 10% = 0.019 in.

WIDTH:

1% = 126 in. | 3% = 126 in. | 5% = 126 in. | 10% = 126 in.

FIRE CLASSIFICATION:

NFPA 701

NFPA 101

CAN/ULC-S109

\$\$\$. .

*Due to the technical limitations of digital cameras and inconsistencies of display monitors, the characteristics and colors of the fabrics seen on your screen may appear different than the actual product. We will be happy to provide samples of our products upon request.

