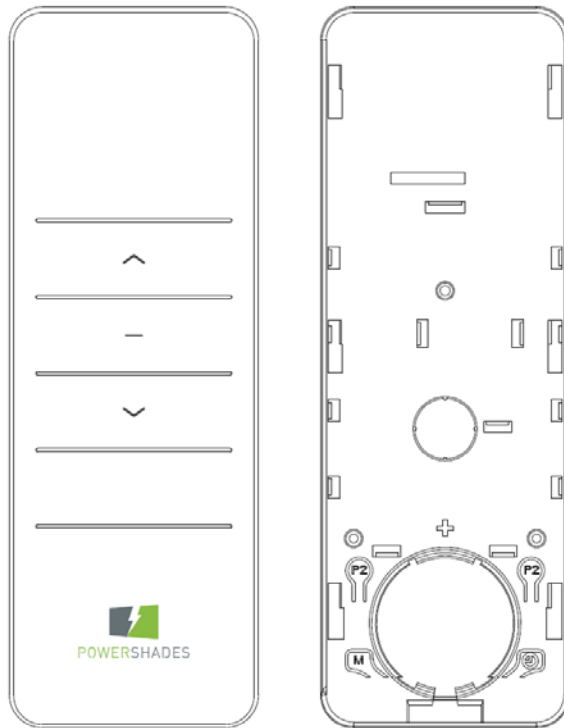




PS2700 Single Channel Remote



Pair a New Remote

1. Hold Setting button on motor head for 2 secs - Motor will jog and beep once
2. Hold STOP Button for 2 secs - Motor will jog twice and beep three times

Switch Control Direction (If Up/Down need reversed)

1. Hold the UP and DOWN buttons for 2 secs - Motor will jog once

Set Top Position

1. Jog to the desired top position
 - a. Tapping button will jog small increments, holding button for longer than two seconds will initiate a constant move, that can be stopped with the stop button
2. Hold the UP and STOP buttons for two seconds - Motor will jog twice and beep three times

Set Bottom Position

1. Jog to the desired bottom position
 - a. Tapping button will jog small increments, holding button for longer than two seconds will initiate a constant move, that can be stopped with the stop button
2. Hold the Down and STOP buttons for two seconds - Motor will jog twice and beep three times

Set/Delete 3rd Position (Optional: this is an intermediate position of your liking – often half way)

1. Jog to the desired 3rd position
2. Press the P2 button - Motor will jog once and beep once
3. Press STOP button - Motor will jog once and beep once
4. Press STOP button - Motor will jog twice and beep three times

Move to 3rd Position

1. Hold the STOP button for two seconds

Speed Up

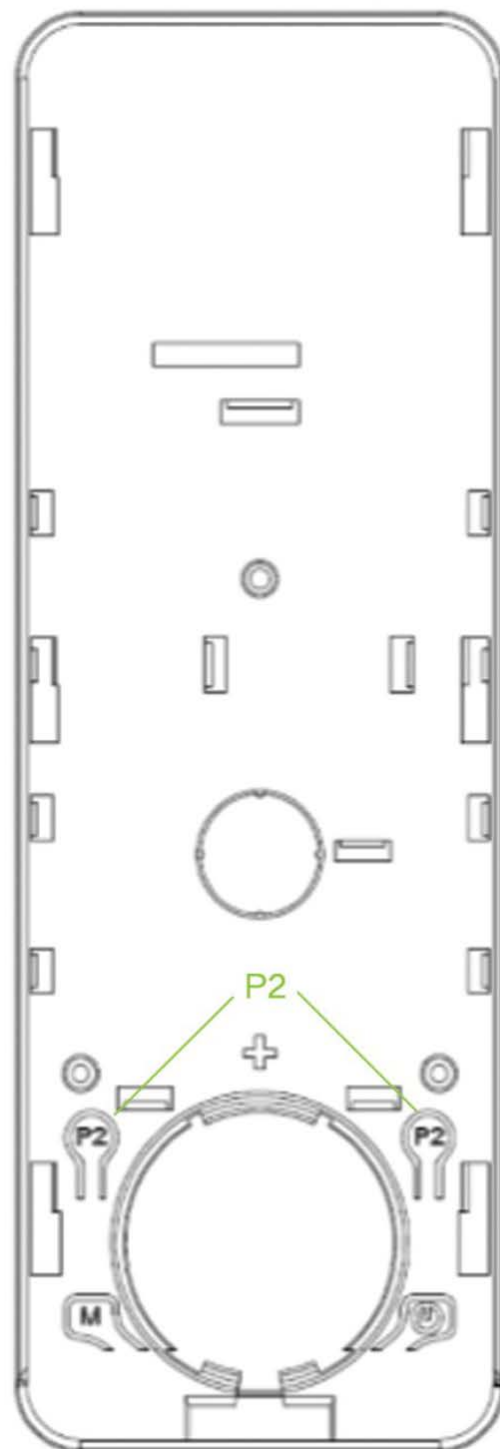
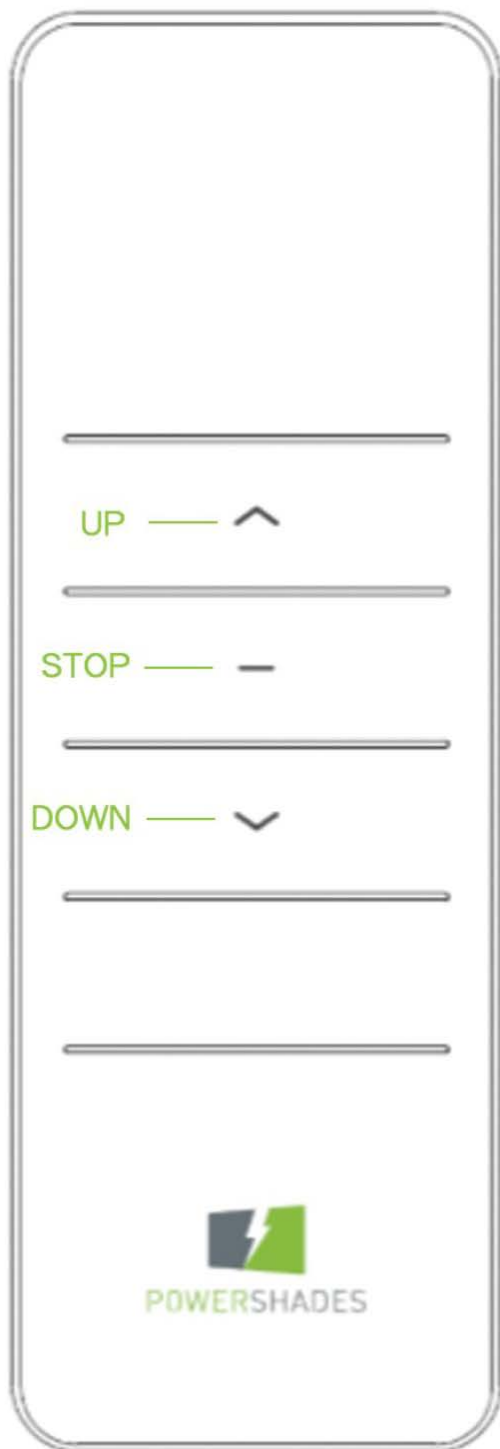
1. Press the P2 button - Motor will beep once
2. Press the UP button - Motor will beep once
3. Press the UP button - Motor will jog twice - there will be no feedback if the motor is already at the max speed.

Slow Down

1. Press the P2 button - Motor will beep once
2. Press the DOWN button - Motor will beep once
3. Press the DOWN button - Motor will jog twice - there will be no feedback if the motor is already at the min speed.

Visit us at Powershades.com

417-553-0504



BACK REMOVED